

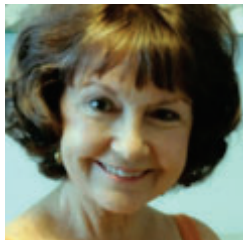
# Creative Art Supply

817 Manatee Ave W Bradenton, FL 34205  
941-259-1449 • creativeart.supply

## Sue Lynn Cotton

### VEGGIE MARKET ITALY

SUELYNNCOTTON.COM



We'll be painting bright colors against old stone walls with a figure. This lovely Italian street scene will be painted with a limited palette of 6 colors. We'll create realism while maintaining lots of lost edges and suggested shapes.



## Watercolor

STUDENT EXPERIENCE LEVEL:  
ALL SKILL LEVELS

**THURSDAY,  
AUGUST 22**

**9:30 AM - 1:00 PM**

**\$30** PER  
STUDENT

ALL ART SUPPLIES AVAILABLE FOR  
PURCHASE IN OUR RETAIL STORE

## SUPPLY LIST

I'll provide a tracing that will fit a ¼ sheet of w/c paper. Just use a lightbox or window to trace it onto your paper. If you like to paint larger, enlarge it.

### SUPPLIES NEEDED:

Arches Watercolor Paper ¼ sheet (11x15) 140# cold press (not Strathmore!)

Brushes suggested:

1" flat brush (Escoda Versatil is great)

#6, #10 & #12 round (KingArt Max Rounds or Princeton Velvetouch Long Rounds)

Pencil & kneaded eraser

Masking tape

Paper support (waterproof board Cor-Plast available at Keeton's or a simple sign board)

Spray bottle

Paper Towels soft, cut in quarter sheets

Palette with large mixing areas (we'll be using our paint from puddles in mixing area rather than small wells.)

Paints

- Quinacridone Gold or New Gamboge
- Lemon
- Permanent Rose or Quin. Rose
- Ultramarine Blue
- Pthalo Blue (gs) or Peacock Blue
- Indigo